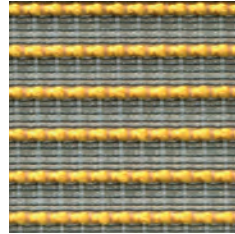
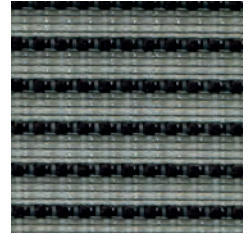


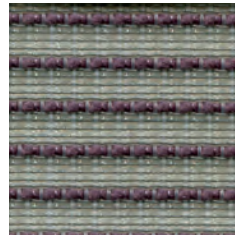
Citron N43



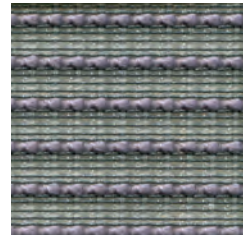
Cadmium Yellow N34



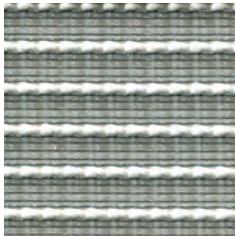
Black N10



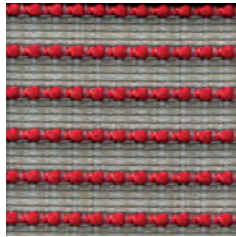
Graphite N03



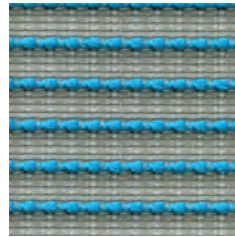
Silver N02



White N01



Crimson N74



Cyan N58

# Pinstripe

## Textile Code N

### Specifications

#### Contents

82% Polyester, 18% Nylon

#### Width 48"

#### Repeat

¼" Vertical, no Horizontal repeat

#### Finish

Stain Resistant

#### Abrasion

150,000 Double Rubs, ASTM D 4157,  
#10 Cotton Duck, Wyzenbeek

#### Brush Pill

Class 5 ASTM D3511

#### Flammability

Passes California technical bulletin  
117, section E

#### Colorfastness to Light

Grade 4,3, 40 Hours AATCC,  
Test Method 16E

#### Crocking

Dry: Grade 4  
Wet: Grade 5  
AATCC Method 8

#### Breaking Force (Grab Test)

Weft: 292 lbs.  
Warp: 280 lbs.  
ASTM 5034

#### Seam Slippage

Weft: 75 lbs.  
Warp: 39 lbs.  
ASTM D4034

As a versatile mesh textile, Pinstripe can be used to upholster the tri-panel backs of Humanscale's mesh chairs, and the seat of Diffrient World. Exploring the idea of suspension, Pinstripe is a lightweight textile that offers the strength and support of a much heavier mesh.

---

*Our Design Philosophy* At Humanscale, we believe the best designs in the world are based on purpose and function. If a design solves a functional problem as simply and elegantly as possible, the resulting form will be honest and timeless.